

FISHWAY STATUS REPORT

Date: 3/6/11

Inspection Period: 2/27-3/5/11

THE DALLES DAM



**US Army Corps
of Engineers**
Portland District

The Dalles Project-Fisheries
P.O. Box 564
The Dalles, OR 97058-9998
Phone: 541-506-3800

Fishways are inspected twice daily. Additional daily monitoring done via automation system in fisheries office.

The Dalles Dam	Inspections	Criteria	Total Number of Inspections:	15	Temperature:	38.9	F
	Out of Criteria	Limit	Comments	Secchi:	5.2	Ft.	
NORTH FISHWAY			North ladder returned to service on 2/28/11				
Exit differential	0	≤ 0.5'					
Count station differential	0	≤ 0.3'					
Weir crest depth	1	1.0' ± 0.1'	Automation failed. Maintenance corrected.				
Entrance differential	0	1.0' - 2.0'	Average	1.2	Daily differentials & weir depths, see AVGS tab.		
Entrance weir N1	0	depth (≥ 8')	Average	9.8			
Entrance weir N2		Closed	Bulkhead installed				
PUD Intake differential	1	≤ 0.5'	0.6' - small amount of debris on the intake rack.				
EAST FISHWAY							
Exit differential	0	≤ 0.5'					
Removable weirs 154-157	0	Per forebay	Auto adjusts 1' increments.				
Weir 158-159 differential	0	1.0' ± 0.1'					
Count station differential	0	≤ 0.3'	Raked on 3/3.				
Weir crest depth	0	1.0' ± 0.1'					
Junction pool weir JP6	0	depth (≥ 7')	Average	12.0			
East entrance differential	0	1.0' - 2.0'	Average	1.6	Daily differentials & weir depths, see AVGS tab.		
Entrance weir E1	0	No criteria	Average	12.0	Manually adjusted.		
Entrance weir E2	0	depth (≥ 8')	Average	11.6			
Entrance weir E3	0	depth (≥ 8')	Average	11.3			
Collection channel velocity	0	1.5 - 4 fps	Average	2.5	See Velocities tab for more complete information.		
West entrance differential	1	1.0' - 2.0'	Average	1.6	OOC at 2.2' - Weirs were adjusted.		
Entrance weir W1	0	depth (≥ 8')	Average	10.0			
Entrance weir W2	0	depth (≥ 8')	Average	10.1			
Entrance weir W3	0	No criteria	Average	Closed			
South entrance differential	0	1.0' - 2.0'	Average	1.6	Daily differentials & weir depths, see AVGS tab.		
Entrance weir S1	4	depth (≥ 8')	Average	8.2	Maintenance has been notified.		
Entrance weir S2	0	depth (≥ 8')	Average	8.3			
JUVENILE PASSAGE							
Sluiceway operation	0	units 1,5,18	Sluiceways 1-2, 1-3, 18-1, and 18-2 open for kelt passage.				
Turbine trashrack drawdown	n/a	<1.5', wkly	Start measuring Apr1. ROV inspection of trashracks next week in prep for season.				
Spill volume	n/a	40%, 24hr	spill start for fish Apr10				
Spill Pattern	n/a	per FPP					
Turbine Unit Priority	0	per FPP					
Turbine 1% Efficiency	0	per FPP					

OTHER ISSUES:**THE DALLES**

Birds: Low numbers of coots and cormorants have been observed around the project. See bird tab below for detailed information.

Pikeminnow: Awaiting dam angling preseason meeting. Planning bass consumption analysis in conjunction with dam angling.

Operations:

North fish ladder returned to service on February 28th. The PUD turbine remained in by-pass until March 3rd. The entrance stayed in criteria during this time.

Ice/Trash sluiceways 1-2, 1-3, 18-1 and 18-2 open for kelt passage. Gates 1-1 and 8-2 will be opened April 1st for juvenile passage.

Maintenance:

All maintenance items completed prior to water up of north ladder. Count station diffuser grating replaced, expansion joint repaired, pickets leads raised 1.5" for lamprey passage and brush removed from ladder walls.

Failed north count station diffuser automation repaired Mar3.

Studies:

East fishway auxiliary water backup study continues. Project support as needed.

Supporting lamprey improvements study as needed.

Research:

USFWS camera mounts installed inside pickets at north and east count stations to monitor lamprey. Cameras to be installed within a month.

Battelle JSAT equipment ready for monitoring juvenile passage. Decision being made on installation of cluster mounts anchored in forebay.

ODFW planning access coordination into BRZ for electroshocking survey of pikeminnow, bass and walleye.

Battelle monitoring turbines intakes for adult passage.

Approved by;
Ron D. Twiner
Operation Project Manager
The Dalles Dam

The Dalles Dam Maximum Daily Bird

Washington Shore

SW-T1: two cormorants

SW-T3: six cormorants resting on rocks

SW-T4: No birds.

FB1: 4-18 cormorants resting on debris boom, seven golden eyes active & six coots active.

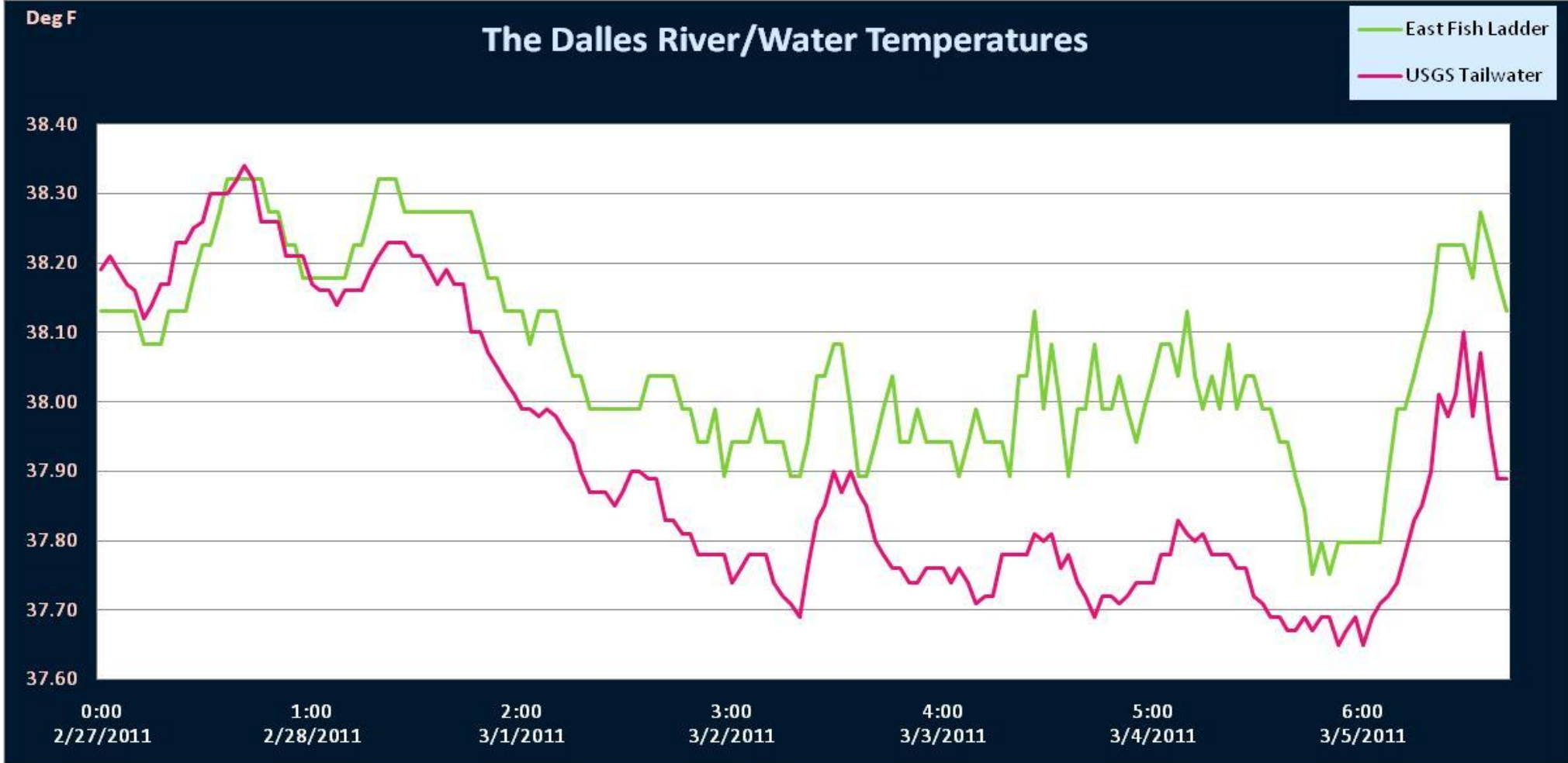
SW-T2: Five scaups resting

PH-T1: one cormorant

PH-T2: No birds.

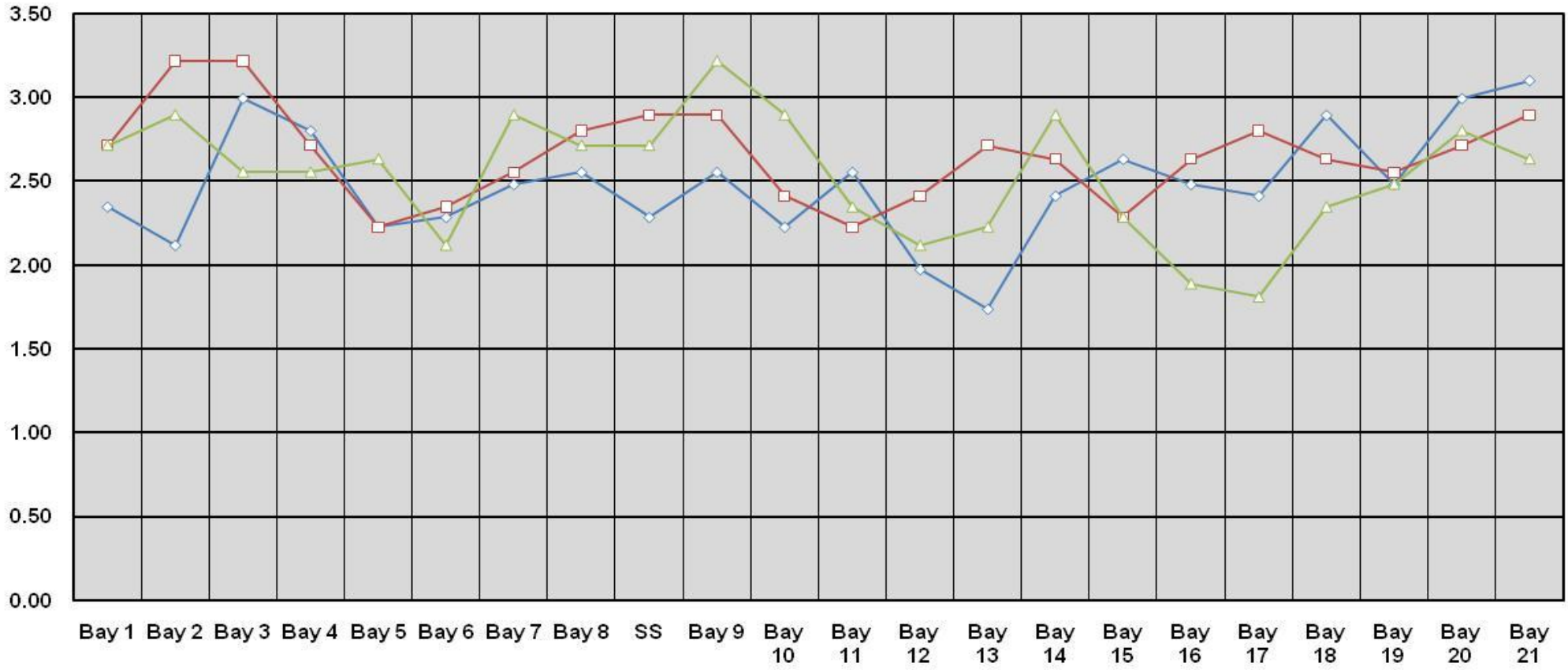
PH-T3: No birds.

Oregon Shore



The Dalles Dam Collection Channel Velocities (fps)

—◇— 3/1/11 —□— 3/2/11 —△— 3/3/11



Temp:		Secchi:	
	38.0	SUN	5.0
	38.0	MON	5.5
	38.0	TUES	5.0
	38.0	WED	5.5
	38.0	THUR	5.5
	41.0	FRI	5.0
	41.0	SAT	5.0
AVG:	38.9	AVG:	5.2

The Dalles Dam Daily Readings and Averages for Temperatures, Secchi, Entrances, and Spill

Date:	North Fish Ladder		East Fish Ladder											% Spill
	North Entrance		East Entrance					West Entrance			South Entrance			
	Differential	N1 Depth	Differential	E1Depth	E2 Depth	E3 Depth	JP 6	Differential	W1Depth	W2 Depth	W3 Depth	Differential	S1 Depth	S2 Depth
27-Feb				11.5	11.6	11.6	12.3	1.5	9.5	9.6		1.4	8.5	8.4
28-Feb			1.2					1.8	9.4	9.4		1.5	8.5	8.5
1-Mar	1.3	9.5						2.2	9.6	9.6		1.6	8.6	8.6
1-Mar	1.1	9.7	1.9	11.9	9.9	9.9		1.8	10.4	10.5		1.6	8.5	8.4
2-Mar	1.1	11.5	1.2					1.8	10.5	10.5		1.7	8.5	8.4
2-Mar	1.1	9.6	2.0	11.7	9.8	9.8	11.7	1.6	10.5	10.4		1.5	8.5	8.6
3-Mar	1.3	9.7	1.9	11.8	11.7	10.2	12	1.1	10.9	10.9		1.7	7.2	8.8
3-Mar	1.1	9.7	1.7	11.9	11.9	10.0	12.6	1.7	10.5	10.4		2.0	8.1	8.1
3-Mar				12.0	12.0	12.1		1.4	10.1	10.1		1.3	7.7	8.3
4-Mar	1.3	9.7	1.6	12.1	12.0	12.0	12.8	1.7	9.5	10.1		1.6	9.1	8.2
4-Mar	1.4	9.7	1.5	12.0	11.9	11.9	12.6	1.8	9.4	10.0		1.6	9.0	8.1
4-Mar				12.0	11.9	12.0		1.7	9.5	10.1		1.6	8.8	8.1
5-Mar	1.4	9.6	1.6	12.3	12.2	12.0	10.4	1.4	10.1	10.1		1.4	7.7	8.2
5-Mar	1.3	9.6	1.4	12.1	12.1	12.1	11.4	1.5	9.9	10.0		1.6	8.0	8.0
5-Mar				12.1	12.1	12.1		1.1	10.0	10.1		1.5	6.4	8.1
AVG:	1.2	9.8	1.6	12.0	11.6	11.3	12.0	1.6	10.0	10.1	Closed	1.6	8.2	8.3

Third fish way inspection for east fish ladder, east, west, and south entrances completed via automation system in fisheries office.